

## And this is the "Satteltester":

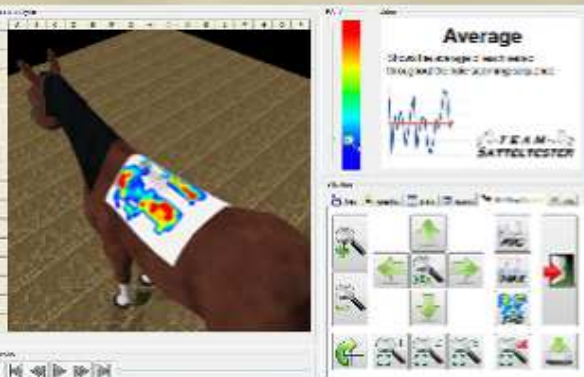


The thin ergonomic measuring pad is positioned underneath the normal saddlery. 256 sensitive thin section sensors cover the whole bearing area between saddle and horseback - as well as the spinal column.



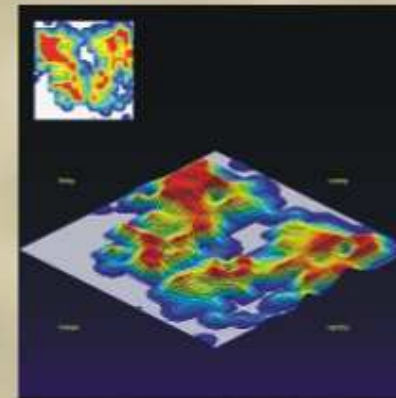
The measured pressure data determined during full motion are transmitted to the computer by radio signal. It can be visualized simultaneously or after the ride by the user-friendly software.

The clearly arranged user interface shows the pressure illustration, the corresponding video picture and a statistical report at the same time. With this precise information you are best prepared to make the saddle like a second skin of the horse. A new fully-rotateable 3D-Horse with the pressure distribution on its back assists you to present your results.



## Designed for daily work

The computer saddle analysis from Team-Satteltester is "the tool" for specialists. The "Satteltester" helps you to detect disadvantageous pressure distribution during full motion. Combining this information with your knowledge and experiences over the anatomy of the horseback allows you a qualified statement of system rider-saddle-horse.



### Analyse the unseen

Use the computer saddle analysis to explain the connections between the system of horse, saddle and rider.

Use this scientific correct tool to achieve transparency for your customers: In "full action" of horse and rider, by descriptive and easily interpretable pressure pictures as well as a parallel video function.

The business confidence will improve and you will easily win new customers.

### Secure yourself

The changes of the exterior of the horse will cause big financial investment to adapt the equipment to the horse. As a saddler or dealer you know the problems with the „argumentation“ in cases of warranty. With the clear documentation of the saddle fitting with the computer-saddle-analysis-system of Team-Satteltester the specialist can supply evidence: **The saddle was fitting!**



### Look at them: the professionals

The professional equestrian sport is subject to a constant development. The requirements for horse and rider become higher and higher. The latest investigations from the veterinary medicine confirm the great importance of saddle fitting. Here the saddle pressure measurement is doing a perfect job.



## Ranges of application:

### Saddle dealers / saddle fitters / saddleries:



The precise and reliable measuring technique in connection with the user-friendly software and an easily understandable diagram offers a perfect tool for optimal customer service for dealers and craftsmen.

### Riding schools / riding coaches:



The visualization of the interacting influence between rider, saddle and horse offers an unsurpassed didactical assistance in achieving fundamental corrections of the rider's sitting position during all training stages of rider and horse.

### Veterinary surgeons / horse clinics:



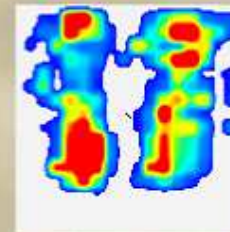
Precisely measured values of the movement offer a valuable diagnostic assistance to holistic therapy of primary back problems and secondary disturbances of the entire musculoskeletal system.

**Competent - holistic consultation  
as well as continuous technical innovation  
for the benefit of our customers  
are our foundation pillars!**

**WWW.TEAM-SATTELTESTER.DE**

# DO YOU REALLY KNOW IF THE SADDLE IS FITTING ???

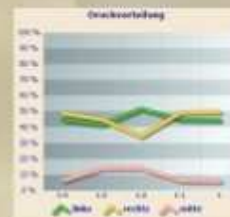
## LOOK AND SEE !!!



**VISUALIZATION OF  
PRESSURE  
DISTRIBUTION...**



**...IN MOTION  
BETWEEN SADDLE  
AND HORSE....**



**...IDENTIFY AND ELIMINATE  
PAINFUL  
PRESSURE PEAKS...**

**THE FIRST ADDRESS FOR  
COMPUTER-SADDLE-ANALYSIS  
TEAM-SATTELTESTER.COM**